

## Our Founding Partners

The MAEscapes partners are dedicated to helping the public learn more about how to use ecological landscaping techniques.

- Doyle Farm Nursery
- GardenScape Design & Consulting
- Mary Kline, Registered Landscape Architect
- Midnight Graphics
- Penn State Cooperative Extension Master Gardeners
- Pennsylvania Department of Conservation and Natural Resources
- Susquehanna Valley Wild Ones
- The Garden's Edge
- York County Conservation District



### *Garden for a Hot, Dry Site*

This entrance garden, planted in the spring of 2004, was designed by Mary Kline, RLA, in consultation with the MAEscapes partners. It illustrates how native plants can be used in groups to create an attractive, low maintenance garden on a hot, dry site. The site was prepared by first rototilling, then sheet mulching with newspaper and cardboard, and finally mulching. Plants were planted through the mulch and then watered in well. No additional fertilizers have been used.

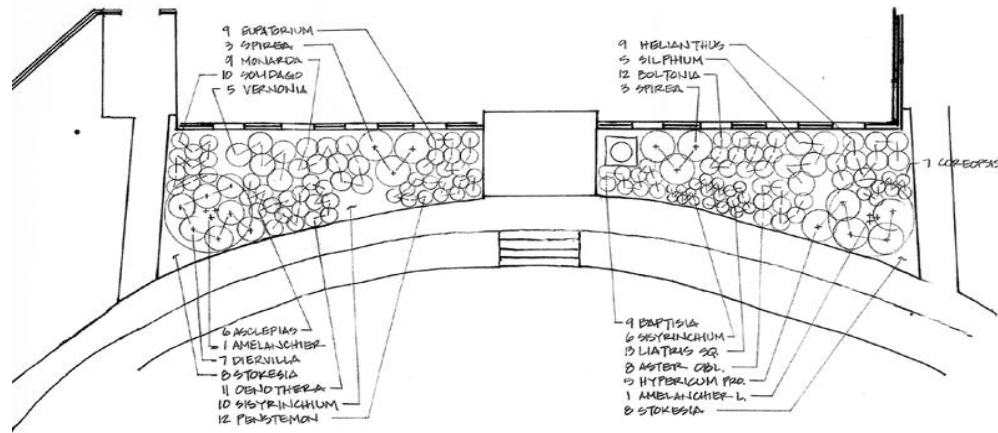
Doyle Farm Nursery graciously donated the herbaceous perennials in this garden.

To learn more about the plants used in these gardens and how you can create your own ecological landscape, contact the Cooperative Extension Office at 840-7408 or visit our office here at the County Annex.



This publication is available in alternative media on request.

Penn State is committed to affirmative action, equal opportunity, and the diversity of its workforce.



PLEASANT ACRES  
 MAE SCAPES  
 SCALE: 1" = 10'  
 JAN 2004  
 MARY G. KLINE, RLA

Common Name	Scientific Name	Light Requirement	Height	Bloom Color	Bloom Time
Allegheny Serviceberry	<i>Amelanchier laevis</i>	Shade to sun	25-40'	White	Early Spring
Butterfly Weed	<i>Asclepias tuberosa</i>	Sun, part sun	1-3'	Orange to Red	Summer
False Blue Indigo	<i>Baptisia australis</i>	Sun, part sun	3-4'	Violet blue	Spring
False Aster	<i>Boltonia asteroides</i>	Sun, part sun	3-4'	White	Fall
New Jersey Tea	<i>Ceanothus americana</i>	Sun	3-4'	White	Summer
Tufted Hairgrass	<i>Deschampsia cespitosa</i>	Sun	1-2'	Silver-bronze	Summer
Low bush Honeysuckle	<i>Diervilla lonicera</i>	Sun to light shade	2-4'	Yellow	Summer to early fall
Thoroughwort	<i>Eupatorium hyssopifolium</i>	Sun, part sun	1-3'	White	Late Summer
False Sunflower	<i>Heliopsis helianthoides</i>	Sun, part sun	3-5'	Yellow to orange	Summer
Bee Balm	<i>Monarda fistulosa</i>	Sun, light shade	3-4'	Violet	Summer
Sundrops	<i>Oenothera fruticosa</i>	Sun	8-14"	Yellow	Summer
Prickly Pear	<i>Opuntia humifusa</i>	Sun	1"	Yellow	Late Spring
Beardtongue	<i>Penstemon smallii</i>	Part sun	18-28"	Rose to white	Late spring
Cup Plant	<i>Silphium perfoliatum</i>	Sun, part sun	3-8'	Yellow	Summer
Early Goldenrod	<i>Solidago juncea</i>	Sun to shade	1-4'	Golden yellow	Fall
Meadowsweet	<i>Spiraea latifolia</i>	Sun	2-4'	Pink	Mid to late summer
Stokes' aster	<i>Stokesia laevis</i>	Sun	12-24"	Lavender-blue	Early Aug. to mid-Sept.
Aromatic Aster	<i>Symphotrichum oblongifolium</i>	Sun	2-3'	Lavender-blue	Late Aug to November
Tawny Ironweed	<i>Vernonia glauca</i>	Sun	3-5'	Purple	Summer
Verbena	<i>Verbena canadensis</i>	Sun	8"	Purple	Summer